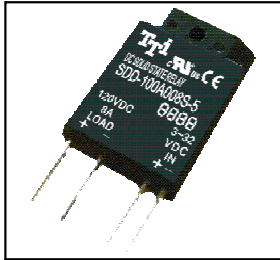


**SDD SERIES SOLID STATE RELAY**

**SDD-100A008S-5**

**DC Control DC Loading S.S.R**



**Specifications**

MODEL SERIES NO.	CONTROL VOLTAGE	MUST TURN OFF VOLTAGE	INPUT IMPEDANCE	LOADING CURRENT	LOADING VOLTAGE	MIN BLOCKING VOLTAGE	MAX OFF-STATE LEAKAGE	FREQUENCY RANGE	MAX 1-CYCLE PEAK SURGE
SDA-200A008S-5R	3 - 32 VDC	MAX 1.0 VDC	1.5 KΩ	8A	3 - 100VDC	400VDC	LESS 1 mA	47-70HZ	80A

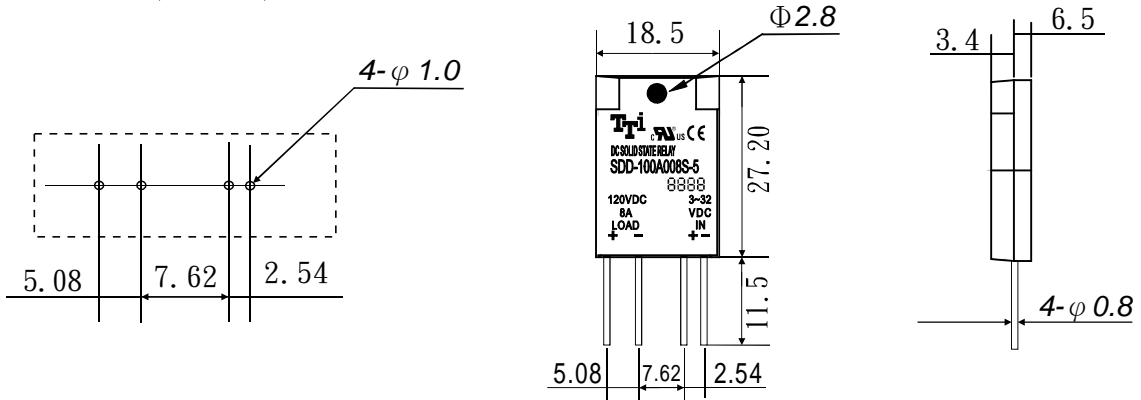
MODEL SERIES NO.	MAX OFF STATE dv/dt	MAX ON-STATE VOLTAGE DROP	ISOLATE IMPEDENCE	DIELECTRIC STRENGTH INPUT-OUTPUT	DIELECTRIC STRENGTH INPUT-OUTPUT-CASE	TURN ON TIME	TURN OFF TIME	CAPACITANCE IN-OUT	WEIGHT (g)
SDA-200A008S-5R	200 V/μsec	1.2VACrms	10 <sup>9</sup> Ω	4000 VACrms	—	LESS 2 msec	LESS 1/2 AC CYCLE	LESS 15 PF	10 g

**PARTS NO.**

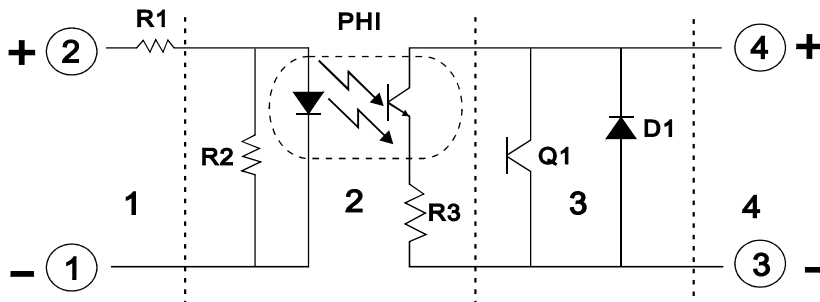
**SDD-100A008S-5**

Switching Type : Nil = N/A  
 Packing : 5 = SIP Of IC Packing Type  
 Phase : S = Single Phase  
 Loading Current : 008 = 8A  
 Control Voltage : A = 3-32VDC  
 Loading Voltage : 100 = 3-100VDC  
 Control Type : DD = DC Control DC  
 S = S.S.R

**Outline Dimensions (Unit : mm)**



**Equivalent Circuit**



- 1. Input Circuit
- 2. Photo Detector
- 3. Protected Circuit
- 4. Output Circuit