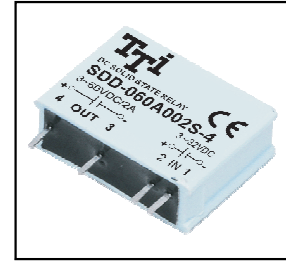


SDD SERIES SOLID STATE RELAY

SDD-060A002S-4

DC Control DC Loading S.S.R



Specifications

| MODEL SERIES NO. | CONTROL VOLTAGE | MUST TURN OFF VOLTAGE | INPUT IMPEDANCE | LOADING CURRENT | LOADING VOLTAGE | MIN BLOCKING VOLTAGE | MAX OFF-STATE LEAKAGE | FREQUENCY RANGE | MAX 1-CYCLE PEAK SURGE |
|------------------|-----------------|-----------------------|-----------------|-----------------|-----------------|----------------------|-----------------------|-----------------|------------------------|
| SDD-060A002S-4 | 3 - 32 VDC | MAX 1.0 VDC | 1.5 KΩ | 2A | 3 - 60VDC | 600VAC | LESS 5 mA | 47-70HZ | 20A |

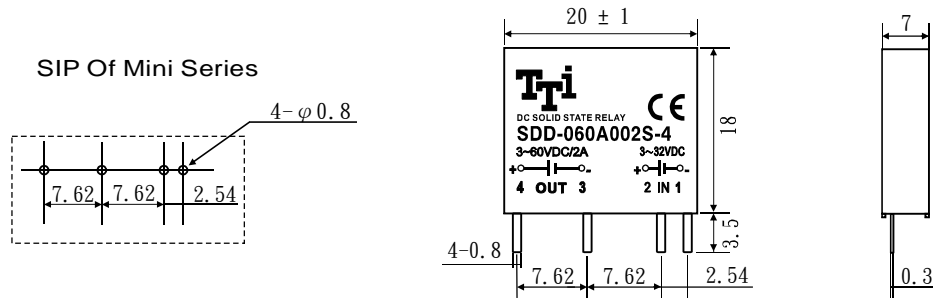
| MODEL SERIES NO. | MAX OFF STATE dv/dt | MAX ON-STATE VOLTAGE DROP | ISOLATE IMPEDENCE | DIELECTRIC STRENGTH INPUT-OUTPUT | DIELECTRIC STRENGTH INPUT,OUTPUT-CASE | TURN ON TIME | TURN OFF TIME | CAPACITANCE IN-OUT | WEIGHT (g) |
|------------------|---------------------|---------------------------|-------------------|----------------------------------|---------------------------------------|--------------|-------------------|--------------------|------------|
| SDA-060A002S-4 | 100 V/μsec | 1.5VACrms | 10 ⁹ Ω | 2500 VACrms | — | LESS 2 msec | LESS 1/2 AC CYCLE | LESS 15 PF | 6 g |

PARTS NO.

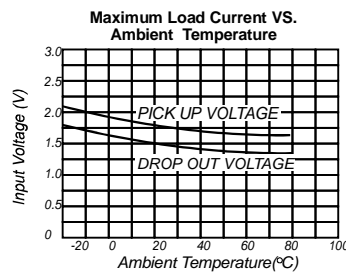
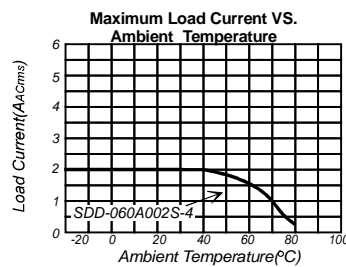
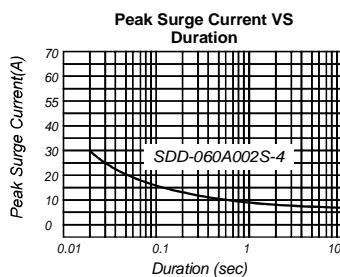
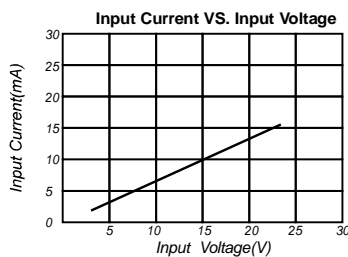
SDD-060A002S-4

- Switching Type : Nil = N/A
- Packing : 4 = SIP Of Mini Type
- Phase : S = Single Phase
- Loading Current : 002 = 2A
- Control Voltage : A = 3-32VDC
- Loading Voltage : 060 = 3 - 60VDC
- Control Type : DA = DC Control DC
- S = S.S.R

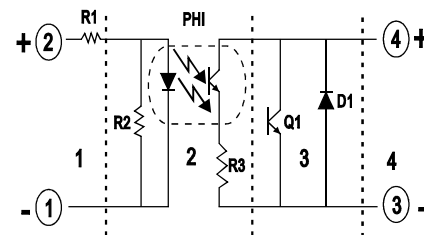
Outline Dimensions (Unit : mm)



Characteristic Curves



Equivalent Circuit



1. Input Circuit
2. Photo Detector
3. Protected Circuit
4. Output Circuit