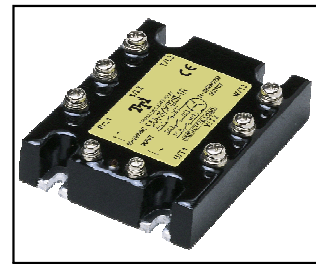


**SAA SERIES SOLID STATE RELAY**

**SAA-200K025I-1R  
SAA-200K040I-1R  
SAA-200K050I-1R  
SAA-200K075I-1R  
SAA-200K090I-1R  
SAA-200K100I-1R**



**AC Control AC Loading S.S.R**

**Specifications**

MODEL SERIES NO.	CONTROL VOLTAGE	MUST TURN OFF VOLTAGE	INPUT IMPEDANCE	LOADING CURRENT	LOADING VOLTAGE	MIN BLOCKING VOLTAGE	MAX OFF-STATE LEAKAGE	FREQUENCY RANGE	MAX 1-CYCLE PEAK SURGE
SAA-200K025I-1R	80 ~ 280 VAC	MAX 9.5 VDC	1.5 KΩ	25A	24 ~ 280VAC	600VAC	LESS 10 mA	47-63HZ	315A
SAA-200K040I-1R	80 ~ 280 VAC	MAX 9.5 VDC	1.5 KΩ	40A	24 ~ 280VAC	600VAC	LESS 10 mA	47-63HZ	450A
SAA-200K050I-1R	80 ~ 280 VAC	MAX 9.5 VDC	1.5 KΩ	50A	24 ~ 280VAC	600VAC	LESS 10 mA	47-63HZ	560A
SAA-200K075I-1R	80 ~ 280 VAC	MAX 9.5 VDC	1.5 KΩ	75A	24 ~ 280VAC	600VAC	LESS 10 mA	47-63HZ	750A
SAA-200K090I-1R	80 ~ 280 VAC	MAX 9.5 VDC	1.5 KΩ	90A	24 ~ 280VAC	600VAC	LESS 10 mA	47-63HZ	900A
SAA-200K100I-1R	80 ~ 280 VAC	MAX 9.5 VDC	1.5 KΩ	100A	24 ~ 280VAC	600VAC	LESS 10 mA	47-63HZ	1030A

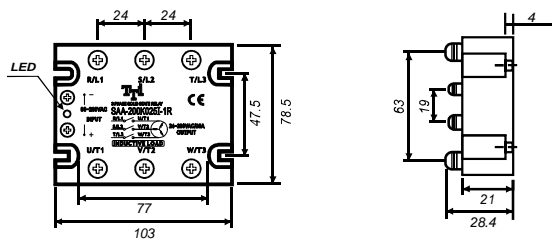
MODEL SERIES NO.	MAX OFF STATE dv/dt	MAX ON-STATE VOLTAGE DROP	ISOLATE IMPEDANCE	DIELECTRIC STRENGTH INPUT-OUTPUT	DIELECTRIC STRENGTH INPUT-OUTPUT-CASE	TURN ON TIME	TURN OFF TIME	CAPACITANCE IN-OUT	WEIGHT (g)
SAA-200K025I-1R	250 V/μ sec	1.6Vrms	10 <sup>9</sup> Ω	2500 VACrms	2500 VACrms	LESS ½ msec	LESS ½ AC CYCLE	LESS 473 PF	600 g
SAA-200K040I-1R	250 V/μ sec	1.6Vrms	10 <sup>9</sup> Ω	2500 VACrms	2500 VACrms	LESS ½ msec	LESS ½ AC CYCLE	LESS 473 PF	600 g
SAA-200K050I-1R	250 V/μ sec	1.6Vrms	10 <sup>9</sup> Ω	2500 VACrms	2500 VACrms	LESS ½ msec	LESS ½ AC CYCLE	LESS 473 PF	600 g
SAA-200K075I-1R	250 V/μ sec	1.6Vrms	10 <sup>9</sup> Ω	2500 VACrms	2500 VACrms	LESS ½ msec	LESS ½ AC CYCLE	LESS 473 PF	600 g
SAA-200K090I-1R	250 V/μ sec	1.6Vrms	10 <sup>9</sup> Ω	2500 VACrms	2500 VACrms	LESS ½ msec	LESS ½ AC CYCLE	LESS 473 PF	600 g
SAA-200K100I-1R	250 V/μ sec	1.6Vrms	10 <sup>9</sup> Ω	2500 VACrms	2500 VACrms	LESS ½ msec	LESS ½ AC CYCLE	LESS 473 PF	600 g

**PARTS NO.**

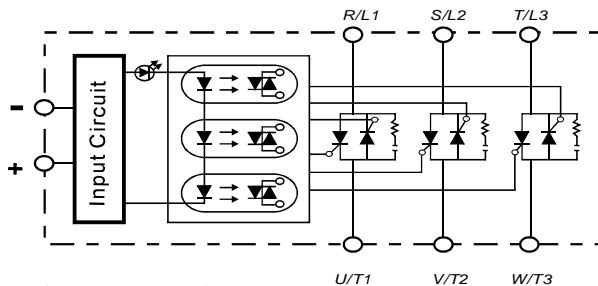
**SAA-200K025I-1R**

Switching Type : R = Random Switching  
 Packing : 1 = Screw Type  
 Phase : I = Inductive Load  
 Loading Current : 025 = 25A, 040 = 40A, 050 = 50A, 075 = 75A, 090 = 90A, 100 = 100A  
 Control Voltage : K = 80~280VAC  
 Loading Voltage : 200 = 24~280VAC  
 Control Type : AA = AC Control AC  
 S = S.S.R

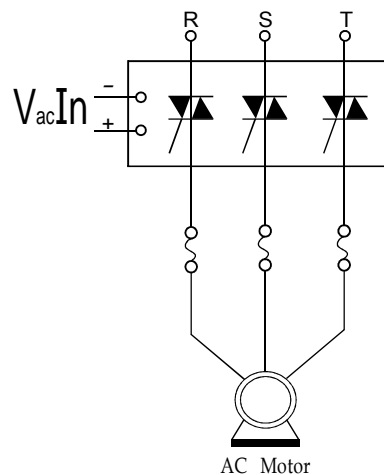
**Outline Dimensions(Unit : mm)**



**Equivalent Circuit**

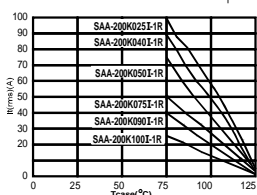


**Example : 3 φ S.S.R Application**



**Characteristic Curves**

RMS On-state Current Versus Case Temperature



Non Repetitive Surge On-state Current Versus Number Of Cycles

