



TRG7

MAIN FEATURES

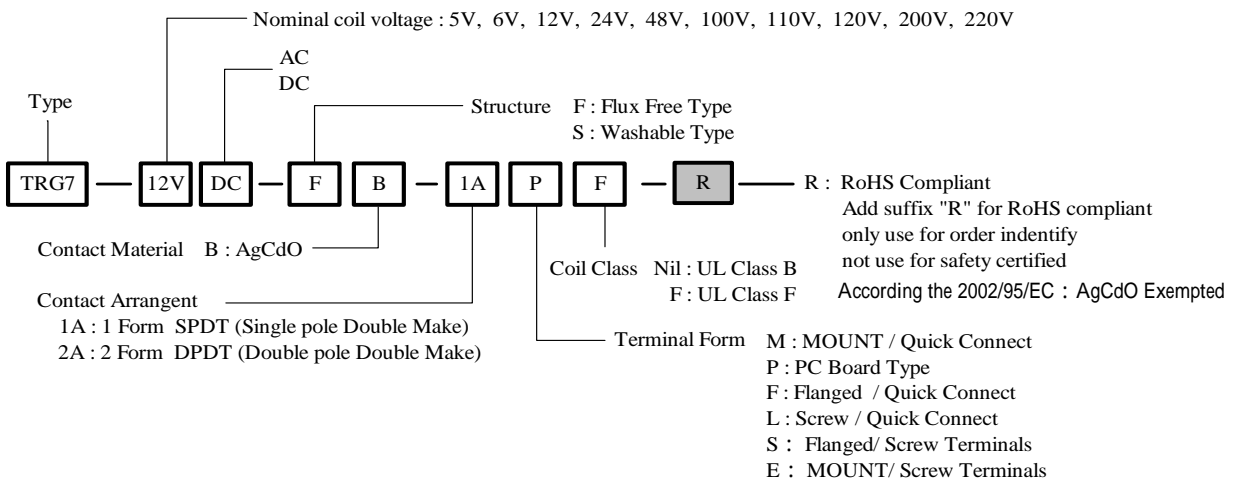
- 30A switching capabilities
- SPST-NO and SPDT configurations
- 4KV dielectric coil to contacts
- Heavy load up to 7500V
- UL & cUL recognized.

APPLICATIONS

- Home appliance: Air conditioners, Microwave ovens, TV-set, Heaters, Stereo.
- Office equipment: Copiers, Vending Machine.
- U.P.S source circuit control , etc.



ORDERING INFORMATION



DIMENSION (unit:mm)

DRILLING (unit:mm)

WIRING DIAGRAM

Term Form: M type

F type

L type

P type

S type

E type

WIRING DIAGRAM

MOUNT Quick Connect

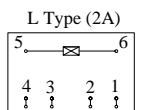
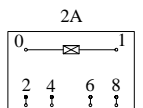
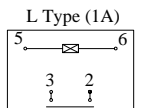
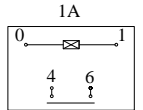
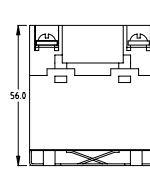
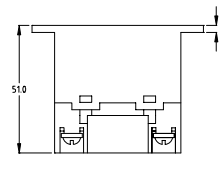
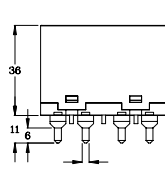
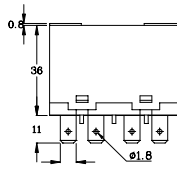
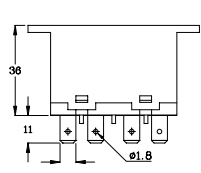
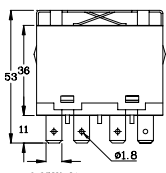
FLANGED Quick Connect

SCREW Quick Connect

PCB Type

FLANGED Screw

SCREW Quick Connect



PANEL CUT OUT

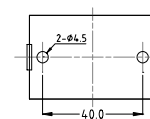
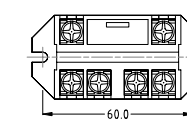
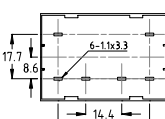
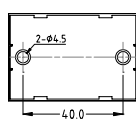
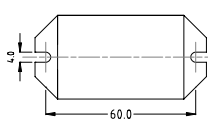
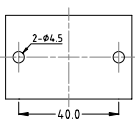
PANEL CUT OUT

PANEL CUT OUT

PANEL CUT OUT

PANEL CUT OUT

PANEL CUT OUT



COIL DATA CHART (AT20)

Nominal Voltage	Pick-Up Voltage	Drop-out voltage	Nominal Current	Coil resistance	Power consumption	Max. allowable Voltage
AC Type (at 20°C)						
VAC	VAC(Max.)	VAC(Min.)	mA(+15%,-20%)	Ω ($\pm 10\%$)	(VA)	(VAC)
6	4.80	0.9	275	18.8	Approx. 2.7	110% of nominal voltage
12	9.60	1.8	138	75		
24	19.20	3.6	74	300		
48	38.40	7.2	39	1200		
120	96.00	18	22.1	5200		
220	176.00	48	9.5	11000		
DC Type (at 20°C)						
VDC	VDC(Max.)	VDC(Min.)	mA($\pm 10\%$)	Ω ($\pm 10\%$)	(W)	(VDC)
5	3.75	0.5	1063.8	4.7	Approx. 1.9	110% of nominal voltage
6	4.50	0.6	319	18.8		
12	9.00	1.2	160	75		
24	18.00	2.4	80	300		
48	36.00	4.8	40	1200		
100	75.00	10.0	19.23	5200		
110	82.50	12.0	17.46	6300		
200	150.00	20.0	9.52	21000		

CONTACT RATING

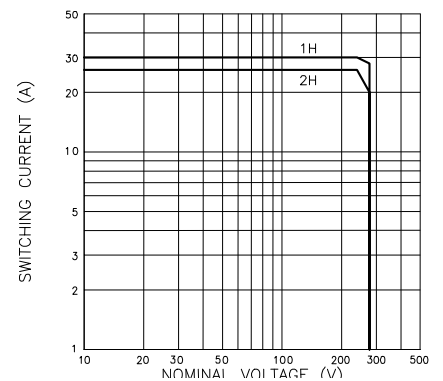
Item	Type	TRG7	
		1 FORM A	2 FORM A
Contact Capacity			
Resistive Load (cos ϕ =1)		30A 250VAC 30A 28VDC	25A 250VAC 25A 28VDC
Rated Carrying Current		30A	25A
Max. Allowable Voltage		250VAC, 28VDC	
Max. Allowable Current		30A	20A
Max. Allowable Power Force		7500VA, 840W	6250VA, 700W
Contact Material		Ag Alloy	

PERFORMANCE (at initial value)

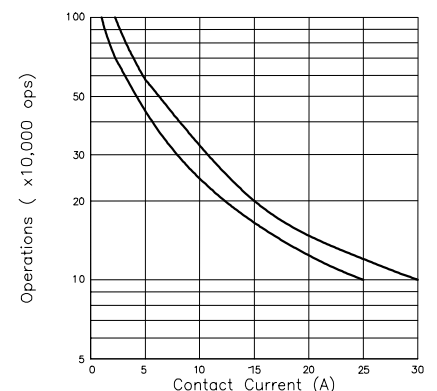
Item	Type	TRG7
Contact Resistance		Max. 100m
Operation time (at nominal voltage)		Max. 30msec
Release time (at nominal voltage)		Max. 30msec
Operating frequency		20ops/minute
Insulation resistance		Min. 1000M (at 500VDC)
Vibration resistance		10 to 55 Hz, at double amplitude of 1.5mm
Shock resistance		98m/s ² Malfunction. 980m/s ² Mechanical.
Dielectric strength		4000VAC. For 1minute between coil and contacts. 2000VAC. For 1minute between open contacts.
Ambient temperature		-55 to +70°C
Humidity		98% , +40
Life expectancy		Mechanical : 1x10 ⁸ operations Electrical : 1x10 ⁵ operations (at rated load)
Weight		abt 120grs. SCREW TYPE 100grs. PC BOARD TYPE
UL & cUL		E156406

REFERENCE DATA

Contact Capacity



Life Curve



This datasheet for reference and subject to change without notice. Please double check final specification with Tai-Shing.